

Metadata session

- Assign UCIDs to a dataset
- Assign units to a dataset
- Produce VOTable with metadata
- Use in VO tools

UCDs

- Manual search

Use this interface to find the UCD corresponding to a description:

Enter a description in natural language:

Clear Form

Reset Form

Heliocentric Radial Velocity

Build UCD

Last updated Tue Oct 21 17:35:31 2008

Suggested complete UCD: **spect.dopplerVeloc;pos.heliocentric**

Refine your search:

The following words matched your query. You might force the selection of words matching precisely your query, and rebuild a UCD using these words:

Clear Form Reset Form

word	definition	flag	score
<input type="checkbox"/> spect.dopplerVeloc	Radial velocity, derived from the shift of some spectral feature	E	55
<input type="checkbox"/> spect.dopplerVeloc.opt	Radial velocity derived from a wavelength shift using the optical convention	E	55
<input type="checkbox"/> spect.dopplerVeloc.radio	Radial velocity derived from a frequency shift using the radio convention	E	55
<input type="checkbox"/> pos.heliocentric	Heliocentric position coordinate (solar system bodies)	S	15

Rebuild UCD using selected words.

UCDs

- Scripting with web services
 - issue with SOAP::Lite installation
 - network problems
- Way to go for building VO layer to collections

\$./assign.pl

Right ascension (FK5) Equinox=J2000 | pos.eq.ra

Declination (FK5) Equinox=J2000 | pos.eq.dec

Record number within the original table | meta.record

PN identification number | meta.id

The [OIII](5007) magnitude | phot.mag;em.line.OIII

Number of photometric measurements | meta.number

Logarithm of the H{alpha}+[NII] flux in units of erg.cm-2.s-1 | phot.flux;em.line.Halpha;arith.ratio;spect.line

The [OIII]/H{alpha} flux ratio | **** Could not find UCD ****

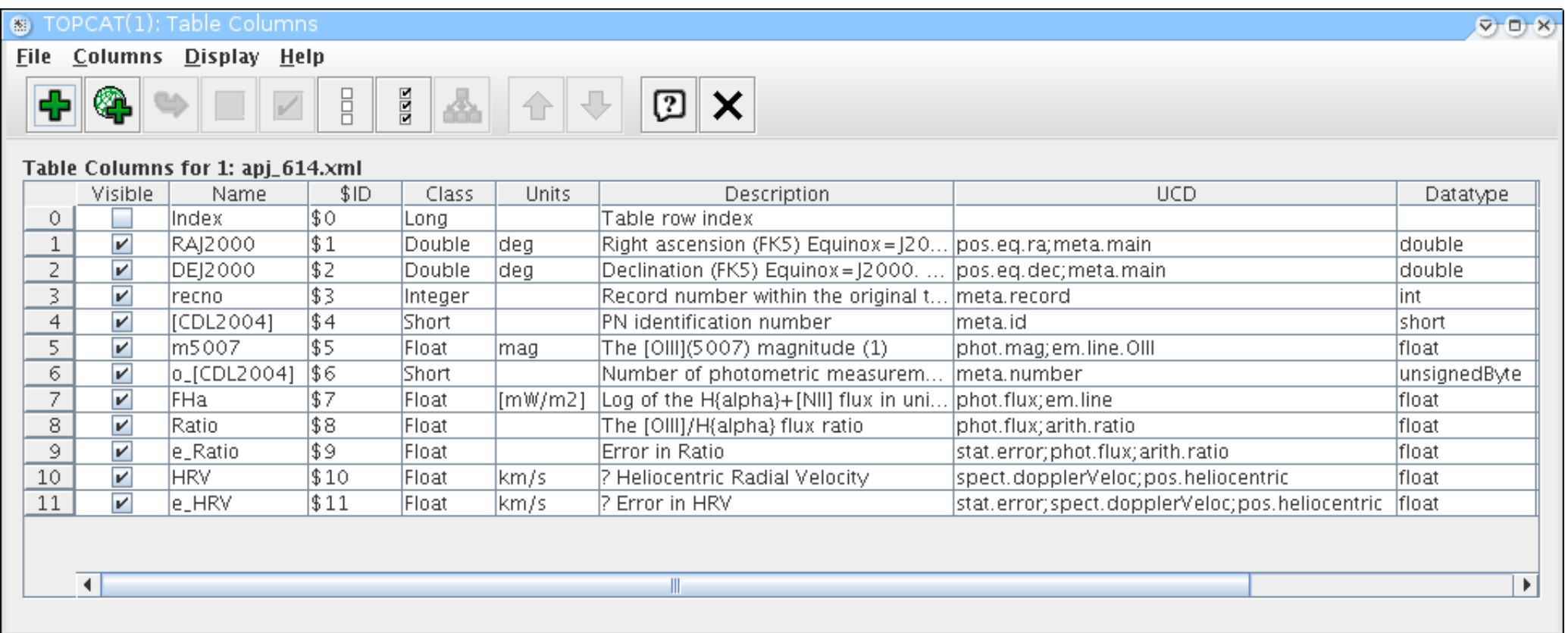
Error in Flux Ratio | stat.error;phot.flux;arith.ratio

Heliocentric Radial Velocity | spect.dopplerVeloc;pos.heliocentric

Error in HRV | stat.error

Units

- Add units information for all columns
- Use TopCat (ascii -> VOTable)



TOPCAT(1): Table Columns

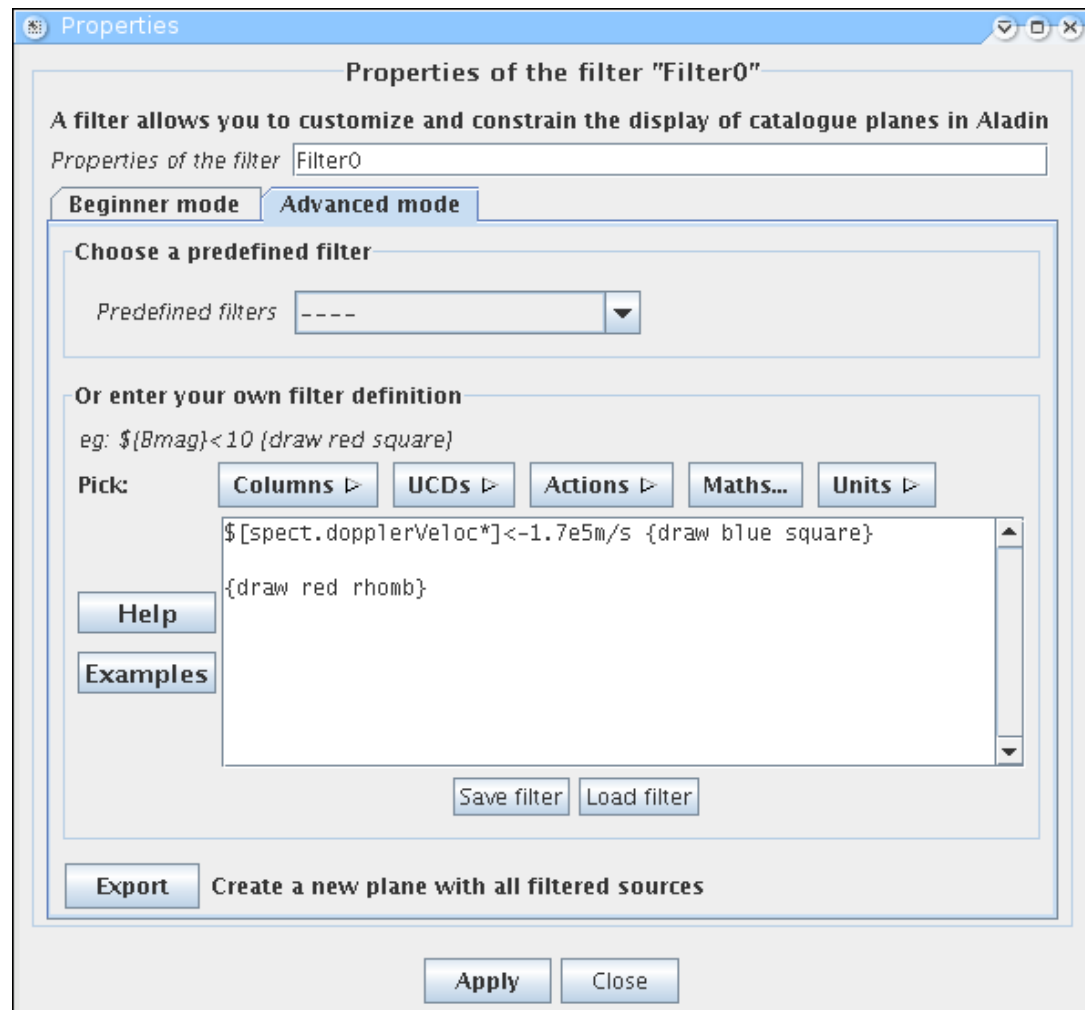
File Columns Display Help

Table Columns for 1: apj_614.xml

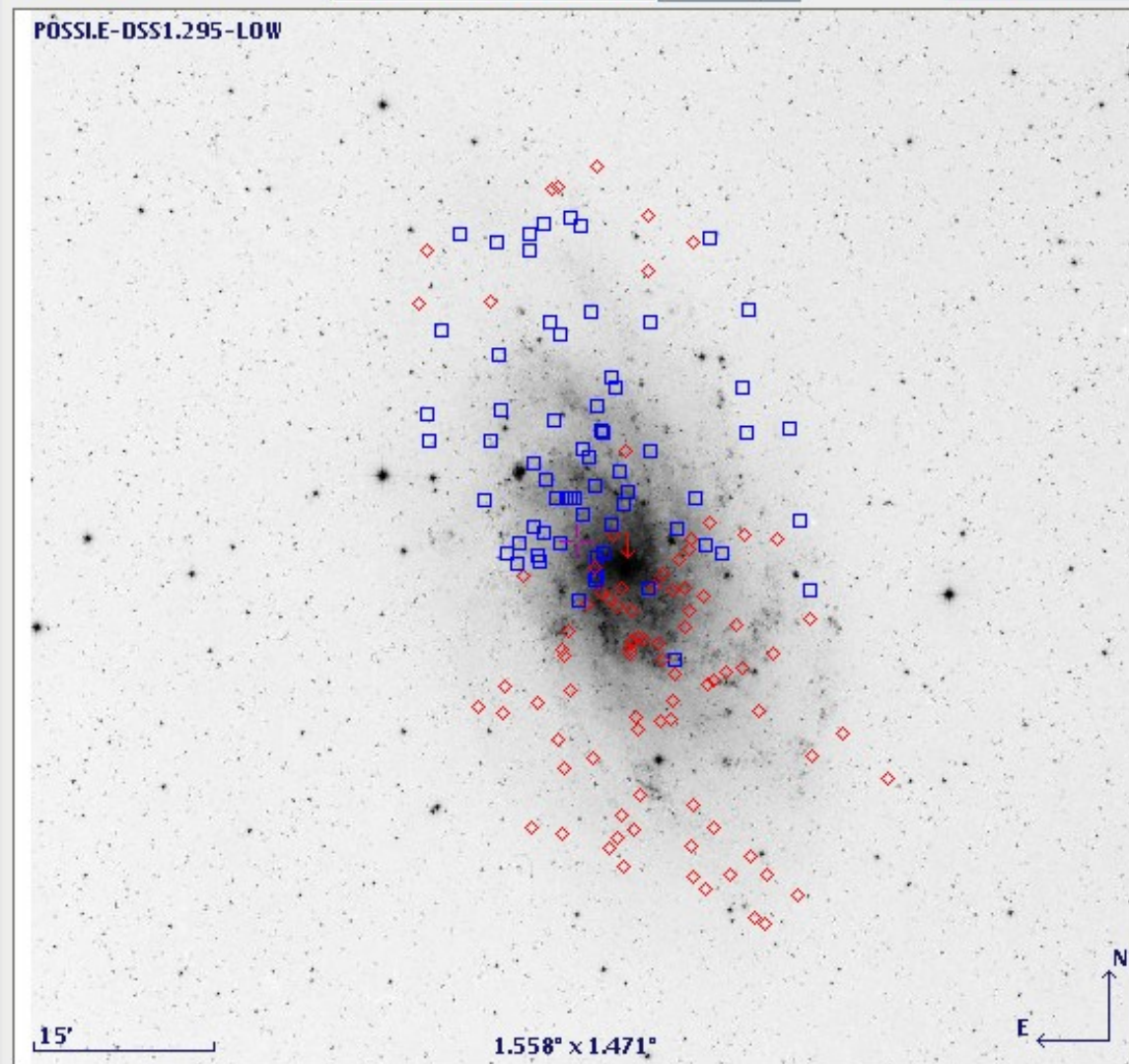
	Visible	Name	\$ID	Class	Units	Description	UCD	Datatype
0	<input type="checkbox"/>	Index	\$0	Long		Table row index		
1	<input checked="" type="checkbox"/>	RAJ2000	\$1	Double	deg	Right ascension (FK5) Equinox = J20...	pos.eq.ra;meta.main	double
2	<input checked="" type="checkbox"/>	DEJ2000	\$2	Double	deg	Declination (FK5) Equinox = J2000. ...	pos.eq.dec;meta.main	double
3	<input checked="" type="checkbox"/>	recno	\$3	Integer		Record number within the original t...	meta.record	int
4	<input checked="" type="checkbox"/>	[CDL2004]	\$4	Short		PN identification number	meta.id	short
5	<input checked="" type="checkbox"/>	m5007	\$5	Float	mag	The [OIII](5007) magnitude (1)	phot.mag;em.line.OIII	float
6	<input checked="" type="checkbox"/>	o_[CDL2004]	\$6	Short		Number of photometric measurem...	meta.number	unsignedByte
7	<input checked="" type="checkbox"/>	FHa	\$7	Float	[mW/m2]	Log of the H{alpha}+[NII] flux in uni...	phot.flux;em.line	float
8	<input checked="" type="checkbox"/>	Ratio	\$8	Float		The [OIII]/H{alpha} flux ratio	phot.flux;arith.ratio	float
9	<input checked="" type="checkbox"/>	e_Ratio	\$9	Float		Error in Ratio	stat.error;phot.flux;arith.ratio	float
10	<input checked="" type="checkbox"/>	HRV	\$10	Float	km/s	? Heliocentric Radial Velocity	spect.dopplerVeloc;pos.heliocentric	float
11	<input checked="" type="checkbox"/>	e_HRV	\$11	Float	km/s	? Error in HRV	stat.error;spect.dopplerVeloc;pos.heliocentric	float

Use in Aladin

- Filter using ucd and units (show velocity pattern)



Location **01:32:51.88 +30:40:48.6** ICRS Pixel **unknown** full



M33

select
pan
zoom
dist
draw
tag
text
filter
cross
rgb
assoc
cont
mlss
pixel
prop
del

Filter0
apj_614.xml
POSSLE-DSS1...

Zoom 2/3x

1.652° x 1.652°

grid alisky multiview match

Search